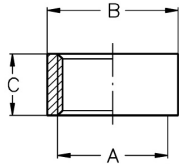
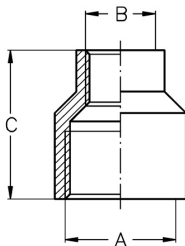


**Threaded fittings DIN EN 10241**
**Art.No**
**EUR**
**Art.No**
**EUR**
**Half socket, Rp**


DN	A	B	C				AISI316Ti	
6	Rp 1/8"	14	7,5				540628	3,80
8	Rp 1/4"	17,5	11				540629	3,90
10	Rp 3/8"	21,3	11,5				540630	4,10
15	Rp 1/2"	26,4	15				540631	4,50
20	Rp 3/4"	31,8	16,5				540632	5,70
25	Rp 1"	39,5	19				540633	8,20
32	Rp 1,25"	48,3	21,5				540634	11,80
40	Rp 1,5"	54,5	21,5				540635	13,60
50	Rp 2"	66,3	26				540636	19,40
65	Rp 2,5"	82	30				540637	43,50
80	Rp 3"	95	33				540638	51,40
100	Rp 4"	122	39				540639	118,30
125	Rp 5"	150	44				540641	Enquiry
150	Rp 6"	180	44				540642	Enquiry

**Similar to DIN EN 10241**
**Reducing socket, Rp**


DN	A	B	C				AISI316C-1.4408	
8-6	Rp 1/4"	Rp 1/8"	26				540729	10,20
10-6	Rp 3/8"	Rp 1/8"	30				540799	10,70
10-8	Rp 3/8"	Rp 1/4"	29				540730	10,70
15-8	Rp 1/2"	Rp 1/4"	33				540731	12,50
15-10	Rp 1/2"	Rp 3/8"	34				540759	12,50
20-10	Rp 3/4"	Rp 3/8"	36,5				540760	19,30
20-15	Rp 3/4"	Rp 1/2"	36,5				540761	19,30
25-15	Rp 1"	Rp 1/2"	42,8				540763	28,40
25-20	Rp 1"	Rp 3/4"	42				540764	28,40
32-20	Rp 1,25"	Rp 3/4"	48,5				540766	46,80
32-25	Rp 1,25"	Rp 1"	52				540767	46,80
40-25	Rp 1,5"	Rp 1"	53				540770	50,60
40-32	Rp 1,5"	Rp 1,25"	53				540771	50,60
50-32	Rp 2"	Rp 1,25"	56				540773	71,10
50-40	Rp 2"	Rp 1,5"	57				540774	71,10
65-40	Rp 2,5"	Rp 1,5"	60				540777	213,60
65-50	Rp 2,5"	Rp 2"	60,8				540778	213,60
80-50	Rp 3"	Rp 2"	62				540782	302,90
80-65	Rp 3"	Rp 2,5"	62				540783	302,80

**Similar to DIN EN 10241**